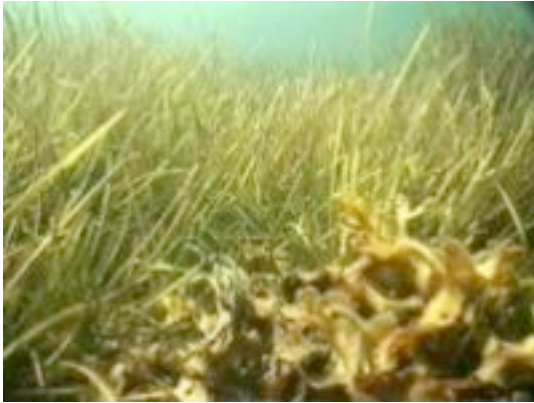


## Gibsons Maps Seagrass Beds

Last Updated: Saturday, 28 September 2013 19:25

---



Dianne Sanford of the Seagrass Conservation Working Group is mapping eelgrass beds in the Gibsons harbour area. The map, which will include GPS coordinates, is a key tool in preserving these important spawning areas. See 91.7 Coast FM [news story](#).

The [Seagrass Conservation Working Group](#) is a consortium of conservation groups, scientists, consultants, and public agencies working together to protect and conserve seagrass meadows.